



Study In Australia

A guide for international students

Why Avondale?

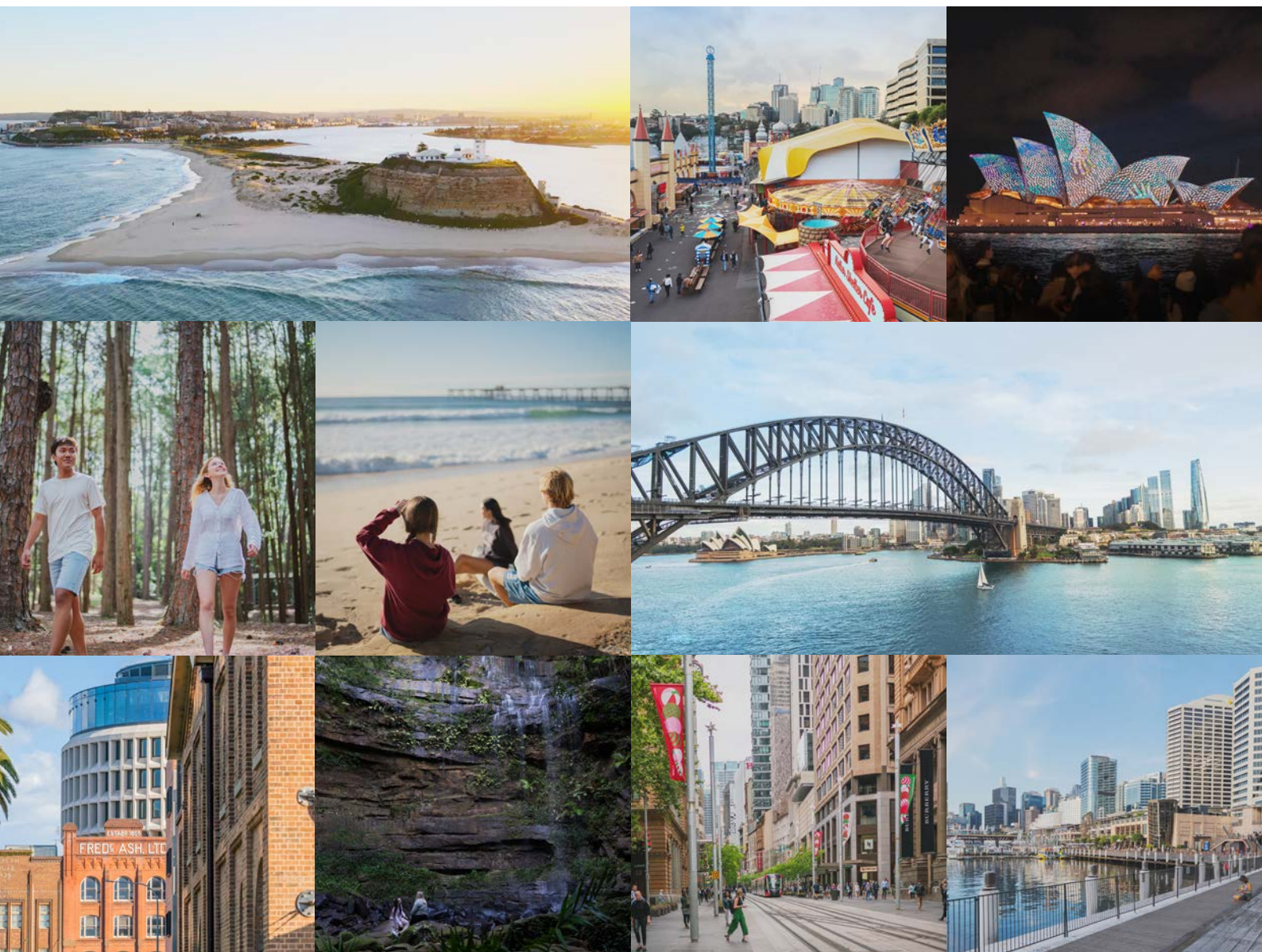
Australian qualifications are recognised globally and graduates from Avondale University have found employment internationally, with many holding prominent positions in business, government and church organisations. According to *The Good Universities Guide 2025*, we are ranked number one in Australia for full-time employment. Studying at our Lake Macquarie or Sydney campuses is an excellent option for students wanting to experience Australian culture in a supportive environment, living and studying alongside others with a passion for service, community, and wellbeing.

Lake Macquarie

Our Lake Macquarie Campus is the perfect location for anyone wanting to immerse themselves in the Australian landscape. Nestled in picturesque farmland, and surrounded by the Watagan Mountains, there are endless opportunities to explore local waterfalls, coastlines, caves, and lakes. Alternatively, you can visit the Hunter Valley, or take the train to Sydney or Newcastle, and experience Australian history, art, food, and culture.

Sydney

Our Sydney campus is a great location for anyone wanting to experience the iconic charm of Sydney. You can explore the world-famous Sydney Opera House, relax on stunning beaches like Bondi, and immerse yourself in a dynamic and diverse culture of music, art, and cuisine. Studying in the hustle and bustle of this beautiful city will definitely be a memorable and exciting experience!



Our International Courses

Undergraduate Degrees

Undergraduate Certificate in Science CRICOS: 111572G
Bachelor of Arts CRICOS: 057294K
Bachelor of Arts/Bachelor of Teaching (Primary) CRICOS: 090540D
Bachelor of Arts/Bachelor of Teaching (Secondary) CRICOS: 090542B
Bachelor of Arts (Counselling) CRICOS: 057294K
Bachelor of Business CRICOS: 057303C
Bachelor of Ministry and Theology CRICOS: 059851C
Bachelor of Nursing CRICOS: 057311C
Bachelor of Science/Bachelor of Teaching CRICOS: 057315K
Bachelor of Theology CRICOS: 059850D

Postgraduate Degrees

Master of Ministry CRICOS: 111572G (on-campus or via distance)
Master of Teaching (Primary) CRICOS: 083267G
Master of Teaching (Secondary) CRICOS: 083268G
Master of Philosophy CRICOS: 094236B
Doctor of Philosophy CRICOS: 059853A

Vocational Courses

SIS40621 Certificate IV in Outdoor Leadership CRICOS: 112221M
SIS50421 Diploma of Outdoor Leadership CRICOS: 108945J

Pathway Courses

Undergraduate Certificate in University Preparation CRICOS: 111574E
Associate Degree in Theological Studies CRICOS: 059849G
Undergraduate Certificate in Business CRICOS: 111573F
Diploma of Business CRICOS: 108610K

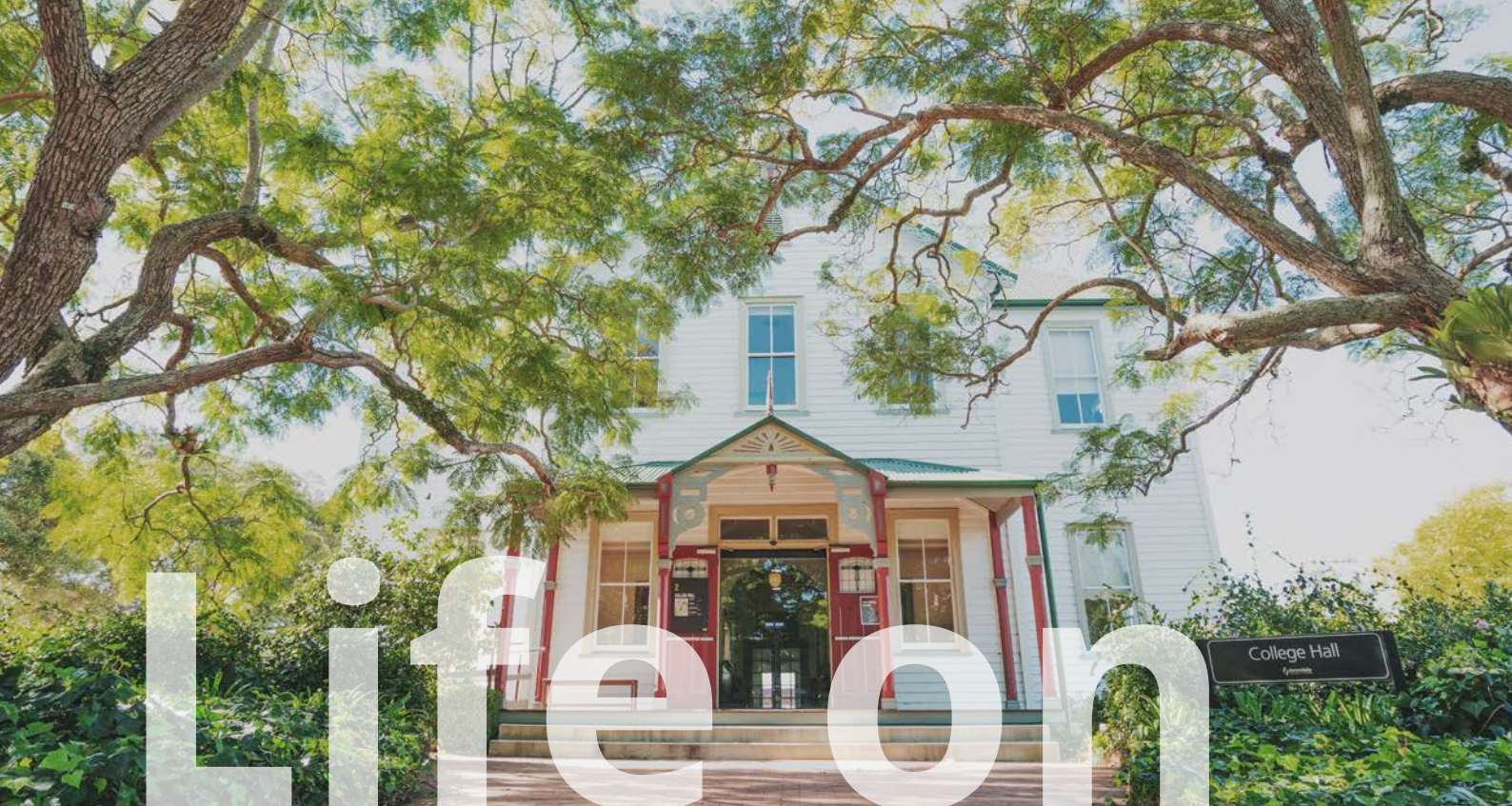
Distance Courses (No CRICOS Code)

You can study the following postgraduate courses, but only in distance mode. Enrol in these online courses as a full or part-time student. You do not require a student visa.

Graduate Certificate in Counselling
Graduate Certificate of Leadership & Management
Graduate Certificate of Lifestyle Medicine
Graduate Certificate in Nursing
Master of Counselling
Graduate Diploma of Lifestyle Medicine
Graduate Diploma of Leadership & Management
Master of Arts (Ministry/Theology Specialisations)
Master of Business Administration
Master of Education
Master of Lifestyle Medicine
Bachelor of Education (Early Childhood)(Birth - 5 Years)

Studying Offshore Online

You will study offshore if you plan to study an Avondale course via distance (i.e., from your home country). To study offshore, you must find a course offered via distance mode. You will find the study mode listed on each course page on the Avondale website.



Lake Macquarie

There are many social events run throughout the year, including a weekly Variety Hour (a space for creatives to present music, skits, and films), Cultural Night, Talent Night, musicals, snow-trips to Jindabyne, and Sisterhood/Brotherhood initiatives to support on-campus students.

University Church (located on-campus) welcomes Avondale students and local community members. Evening worships programs such as SALT create a supportive spiritual community on campus. Avondale also runs a week-long Festival of Faith

each semester. Avondale University welcomes students of different faiths.

Avondale offers students free counselling, academic tutoring, spiritual mentoring, and community connection through service activities and student-run events.

Check out the on-campus gym and pool, participate in our weekly sport comps (including basketball, netball, volleyball), or run along the scenic nature loops that wind around the campus.





Sydney

Live and study at the Sydney Adventist Hospital, the largest private hospital in New South Wales. Housed within the one building, the gender specific female and male residences house up to 240 boarders. Student rooms are all single occupancy with use of shared facilities. Age restrictions are applied to applicants, with a minimum acceptable age of 18 years of age. Our Sydney campus is also set to deliver new student and staff accommodation in a \$85 million construction project scheduled for completion in 2026.

The Avondale Experience is so much more than just what happens in the classroom. The community and lifestyle is what makes studying at Avondale so unique. There are plenty of on-and off-campus opportunities to connect with your fellow students, be more active through team sport, and serve as part of the greater Avondale community. The sense of belonging you will find here will stay with you long after you graduate.



How do you want to study?

There are several options to study with Avondale University as an international student.

> Option 1

Study Onshore: Study a higher education or vocational course full time in Australia.

> Option 2

Holiday, work, and study: Visit Australia and study up to 1-4 units over 4 months.

> Option 3

Study Online: Enrol in one of our online courses and study from your own country (Offshore).

General Requirements

English Language Proficiency Tests

Courses at Avondale are delivered in the English language. Applicants require appropriate English language proficiency for admission and the level of English required depends on the course. International applicants and those whose primary language is not English, must demonstrate proficiency in English by one of the following tests:

- IELTS (International English Language Testing System)
- PTE Academic (Pearson Test of English)
- TOEFL iBT (Test of English as a Foreign Language)
- CAE (Cambridge C1 Advanced)
- OET (Occupational English Test)

Minimum test requirements for specific courses are available on our website.

- Your potential circumstances in Australia
- The value of the program to your future
- Your immigration history; and
- Other matters relevant to your intention to remain in Australia temporarily.

Confirmation of Enrolment (CoE)

When you return the signed Written Student Agreement Acceptance Form and pay your fees, we issue you with a Confirmation of Enrolment (CoE). Your CoE will contain information about you, the course you will study, the estimated cost and the duration of your study. A CoE provides evidence that you are eligible to enrol at Avondale and have accepted your place. You will need a CoE when lodging your student visa application to study in Australia. Apply for a visa as soon as you receive your CoE from Avondale.

Visa

The application fee for the Australian Student Visa (Subclass 500) is non-refundable, even if the application is unsuccessful. For more information about visas, contact the Department of Home Affairs or the Australian Embassy, High Commission or diplomatic mission in your country. If you are granted a student visa, you must comply with all visa conditions. These may include:

- Maintaining enrolment in a CRICOS-registered program
- Maintaining satisfactory course progress and attendance
- Holding approved Overseas Student Health Cover while you're in Australia
- Informing Avondale immediately if you change your Australian address or contact details.

> Study Onshore

Studying full time at Avondale is an amazing immersive experience - not only do you get the AvondaleXP but you get to experience Australia to the fullest. If you choose to study in Australia full time, there are a few extra things you may need to take into account.

Genuine Student Requirement (GSR)

We must ensure that international students intending to study at Avondale are Genuine Students. The factors that are considered during the assessment of the GS requirement include:

- Your personal circumstances in your home country

Oversees Student Health Cover (OSHC)

It is a condition of your student visa to maintain Overseas Student Health Cover (OSHC) for the duration of your student visa. OSHC assists international students in meeting the costs of medical and hospital care they may need while in Australia.

Bringing your family to Australia

You can include family members on your student visa application. If you are bringing children between the ages of 5 and 18 for longer than three months, they will need to attend school full time. For further details, visit the Department of Home Affairs.

Working in Australia

Most international students with a student visa are allowed to work while studying in Australia. Casual or part-time work is a great and flexible way to earn money. Competition for casual or part-time jobs can be high, making them difficult to find. Jobs are usually offered in areas like retail, hospitality and customer service. Generally, you shouldn't expect a casual job to cover your tuition fees or expenses. Before you work in Australia:

- Check your visa conditions. For a Student visa (subclass 500), you can only work for a certain number of hours once your program has commenced. Make sure you understand all conditions that apply to you.
- Apply for a tax file number from the Australian Tax Office. If you don't provide your employer with a tax file number, your income will be taxed at the highest tax rate.
- Understand your work rights in Australia. All international students are protected by Australian law while working in

> Holiday, work, and study

There are Work and Holiday visa options that allow you to study up to 4 months while in Australia.

Study units across arts, theology, business, and counselling for a semester, then explore and work in Australia for the remainder of your visa. Talk to us for more details of what you can study. You may be able to get Recognition of Prior Learning (RPL) back in your home country for units successfully completed in Australia. For more information about Work and Holiday Visas, visit the Department of Home Affairs website.

> Study Online

Moving internationally might not be an option for you, so online study may be the right option. Most of our courses are offered online. Some courses include Winter School on campus, so you will be required to attend these intensives on the Lake Macquarie campus during June/July. Extra costs like airfares, visas, etc.. are at your own expense. Head to our website to find a course that's right for you.

Fees

International students are required to enroll in a full-time load of 4 units (24 credit points). Pricing for individual units (subjects) will vary. This is a condition of a Student Visa.

International students are required to pay their fees for the first semester before being able to be enrolled as a Avondale University student. The exact fees will be outlined on the official letter of offer, including tuition fees, Student Services Amenities Fee (SSAF) and accommodation/meals (if applicable).

If you wish to apply for funding as a US student, you may be eligible for a private loan. Being a deferment-only institution means we will not accept new students applying for United States Federal Loans, including loans applied for under the Direct Loan Program or the Federal Family Education Loan Program.

Scholarships

There are many opportunities for students to receive financial assistance through scholarships. Recipients cannot receive more than one Avondale-funded scholarships simultaneously. For a full list of scholarships visit the Avondale website.

International Student Scholarship: If you are a new or returning international student who holds a student visa; studies on campus, and enrolls in an undergraduate or postgraduate coursework course you could receive \$7000 (\$3500 per semester or equivalent) in your first year of study and \$1500 (\$750 per semester or equivalent) in your second.

Driscoll Pacific Islands Student Scholarship: If you are a new student who is a citizen and permanent resident of a Pacific island nation within the territory of the South Pacific Division of the Seventh-day Adventist Church and enrolls in an undergraduate, postgraduate coursework, or higher degree by research course, you could receive \$3500 in your first semester and \$3500 in your second.

Avondale Student Research Scholarship: The scholarship is open to all Avondale students who are enrolled beyond the first year of their course and have a GPA of 5.0 or above. Scholarships are valued at \$4000 each, paid in two lump sums.

Cost of living

Accommodation

A refundable rental bond is required upon application for the residential halls. Optional gym memberships cost around \$100 per semester at Lake Macquarie campus.

Meals

Our Lake Macquarie campus cafeteria, 7 at Avondale, offers two meal packages for residential students:

- Option 1: approx. \$133.00 for students who prefer to cook some meals for themselves.
- Option 2: approx. \$266.00 for students who want the added convenience and social connection.

Unused weekly meal credit is rolled over each fortnight. Meal credits must be used before the end of each calendar year.

Student Services and Amenities Fee (SSAF)

Avondale charges a compulsory Student Services and Amenities Fee (SSAF) to fund non-academic services and student programs. The fee amount varies depending on your study mode.

Transport

Public transport fares in NSW are managed through the Opal card system. A student fare from Morisset to Sydney is approximately AUD \$7, while trips to Newcastle range from AUD \$5 to AUD \$11, depending on the route and time.

Study-Related Expenses

Many textbooks are less expensive when bought second-hand. Some textbooks may be available to read in the library. A laptop or computer is essential for coursework.

Further Information

Needing help with finances? The Australian Government has multiple resources. Visit:

- MoneySmart
- Study in Australia (Australian Government)
- Department of Home Affairs

Steps to apply

Before applying, check the specific application open and close dates for onshore and offshore international applicants. An automated email confirms your submission when you apply to study at Avondale. Our Student Administration Services (SAS) team will contact you within five business days to verify your application details. For further detail and specific document and form requirements visit the International Students page on the Avondale website.

- ✓ **Step 1:** Choose Your Program
- ✓ **Step 2:** Confirm Your Eligibility for Student Visa Requirements
- ✓ **Step 3:** Prepare Your Documents
- ✓ **Step 4:** Submit Your Application
- ✓ **Step 5:** Application Assessment
- ✓ **Step 6:** Receive an Offer
- ✓ **Step 7:** Accept Your Offer
- ✓ **Step 8:** Apply for a Student Visa
- ✓ **Step 9:** Plan Your Arrival



A greater vision of world needs.

Since 1897

#1 in Australia ★★★★★

Full-Time Employment*

*The Good Universities Guide 2025



"Studying internationally has built me up in terms of personality, character, academically... it helped me be more independent."


Neuel - *International nursing student*


Find out more


Email study@avondale.edu.au


Call +61 02 4980 2377



 [avondale_uni](#)

 [Avondale University](#)

 [avondaleaustralia](#)

 [Avondale University](#)

This publication is correct as of June 24, 2025 3:27 PM. Check our website for the latest information.

Avondale University: A member of the worldwide Adventist system of universities and colleges
582 Freemans Drive | PO Box 19 Cooranbong NSW 2265 Australia
ACN: 108 186 401 | ABN: 53 108 186 401 | CRICOS: 02731D | RTO 91191 | TEQSA: PRV12015
www.avondale.edu.au

